

# KARBON



**rush**  
DISTRIBUTION





### Contact Rush Distribution

60 Wirraway Dr,  
Port Melbourne VIC 3207

Phone: (03) 9646 6661  
Email: [sue@rush.net.au](mailto:sue@rush.net.au)

Karbon is the largest supplier of resort uniforms in the Southern hemisphere currently outfitting 4,500+ employees from Australia and New Zealand either in full or in part. We have over fifteen years' experience as the largest supplier of uniforms in this region. In addition to resort employee's we also outfit many Clubs, Teams, Programs and Schools with custom ski garments.

Rush Distribution have a thorough understanding of the unique snow conditions in Australia and New Zealand compared to Northern hemisphere conditions. We experience a much wetter environment and as such Karbon has invested considerable time into producing fabric with the most waterproof laminates/coatings while maintaining a good level of breathability. Extensive testing in the sometimes very wet conditions has been completed to ensure we can offer the most up to date technology in Waterproofing.

Karbon offer a 30,000mm waterproofing (as a full laminate) with a 20,000mm breathability in a stretch fabric. This is exclusive to the Southern hemisphere market. An added benefit of this technology is its superior ability to repel grime and dirt.



# Branding

Karbon offers branding/logo application on garments in two ways:

For garment orders meeting factory minimum order quantities (MOQ's), branding can take place at the time of garment manufacture (factory application) and is considerably less expensive than local application of branding. The two most common methods, which are both practical and cost effective are heat transfers and embroidery. A combination of both methods can be used on garments and advice can be provided on the best choice for each logo.

For smaller orders that do not meet MOQ's we have the ability to apply logos in-house post-manufacture either as embroidery or as heat transfers. (local application)

## Embroidery

**Factory application:** For a garment order of approx. **30+ units** embroidery can be done at the time of garment manufacture and includes the seam-sealing process (to re-instate the waterproofing of the area embroidered)

- Detail sheet artwork showing logo size, colour and placement is generated for approval prior to final order placement
- Pricing will be provided on receipt of electronic logo files and size of embroidery required
- Location/s of embroidery is unlimited and can be applied to chest, back, shoulder, wrist etc for jackets and any location on pants

There is no local embroidery application option for less than 30 units

# Branding

## Heat Transfers

The minimum order quantity set by our supplier is **100 units per heat transfer**. Pricing is considerably more economical than embroidery however the MOQ will need to be factored in for small orders where there will be a quantity of unused transfers remaining.

The MOQ is the same regardless of 'factory application' or 'local application'

**Factory application:** For a garment order of approx. **30+ units** heat transfer application can be done at the time of garment manufacture. The seam-sealing process is not required for heat transfers.

- Detail sheet artwork showing logo size, colour and placement is generated for approval prior to final order placement
- Pricing will be provided on receipt of electronic logo files and size of heat transfer required

**Local application:** For a garment order of **less than 30 units** heat transfer application is done locally in Melbourne.

- No garment artwork is generated prior to heat transfer application however a small fee is charged for the application process
- Transfer pricing can be provided on receipt of electronic logo files and size of heat transfers required
- Logos which have any fine elements must be put on a solid background to avoid peeling. This is not a requirement of embroidered logos

## Timing

We submit our bulk uniform order to our factories in **September** of each year. Goods are shipped during April of the following year to be supplied in **May**.

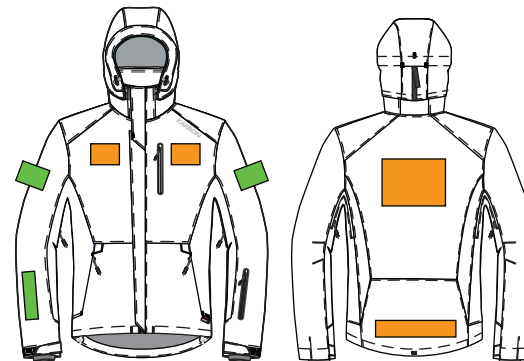
All logoing done as part of the garment manufacturing process must be finalised in **September** whereby in-house logoing can be finalised during **Feb - April**.

## Payment

We require a **40% deposit** to be paid on placement of custom orders. An order confirmation and deposit invoice will be supplied in September/October. The balance will be payable in May of the following year prior to delivery.

# Outerwear jackets

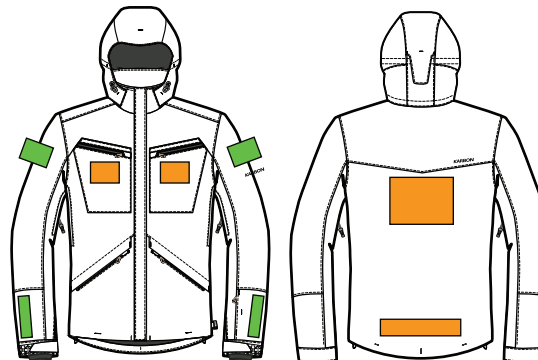
## KR458 - Freedom/ KR460 Freedom Junior jacket



Colour Blocking Available



## K6502 - Silica jacket/ K6502J Silica junior jacket





- KR458 / FREEDOM**
- KR460 / FREEDOM JUNIOR**
- K6502 / SILICA**
- K6502J / SILICA JUNIOR**

### Specs

- Quadra Stretch fabric
- Karbonite 30,000mm waterproofing
- Choice of insulation weights
- Fully seam-sealed
- Removable insulated hood
- Multiple cargo pockets
- Goggle wipe
- Audio pocket

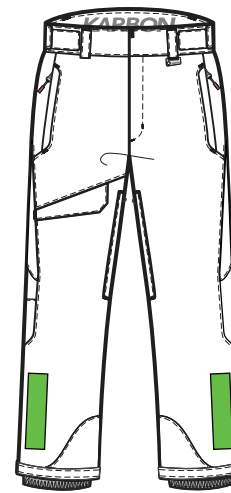
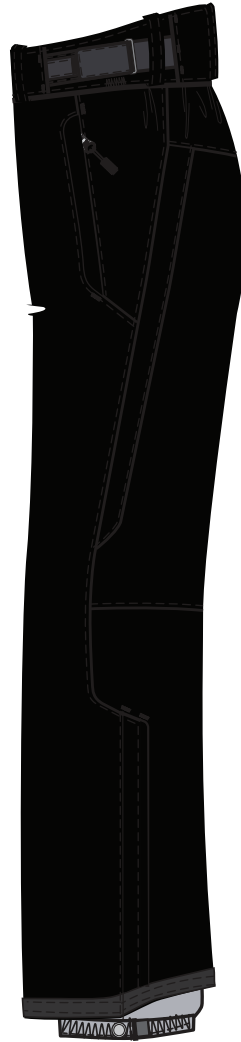


### Common logo positions

-  Factory logoing only
-  Factory logoing and Local logoing possible

\*factory logoing can be placed anywhere on garment.

# Outerwear pants - KR448 Stratos pant





## Specs

- Quadra Stretch fabric
- Karbonite 30,000mm water-proofing
- Shell (0 weight) or 40 weight insulation
- Critically seam-sealed
- Re-enforced in high wear areas
- Cordura scuff pad areas
- Alouva lined adjustable waistband
- Suspender compatible
- inner snow cuff with Velcro closure
- belt loops and venting



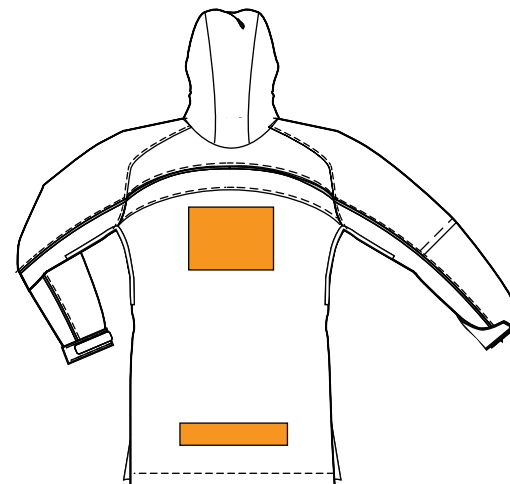
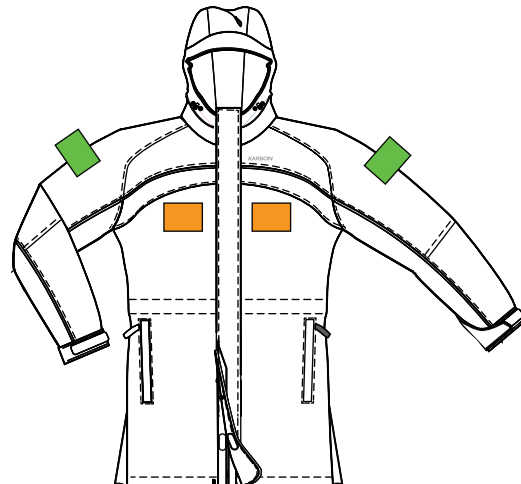
## Common logo positions

-  Factory logoing only
-  Factory logoing and Local logoing produced

\*factory logoing can be placed anywhere on garment.

# KA909 - Raincoat

An essential top layer in the sometimes very wet Australian and New Zealand conditions, this coat provides the ultimate protection to stay dry in without overheating or retaining moisture internally.



## KA909 / Tranquility

### Specs



- 100% waterproof raincoat
- full front zip
- Fixed hood
- Seam sealed
- Side slit bottom
- Venting
- Wrist adjusters

### Sizing

This garment is an overcoat, made generously to fit over insulated snow jackets

This coat comes in 4 sizes: Small, Medium, Large and X-Large

### Common logo positions

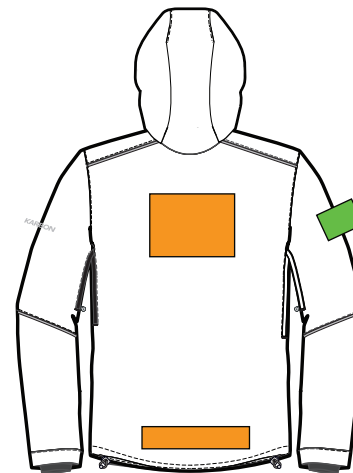
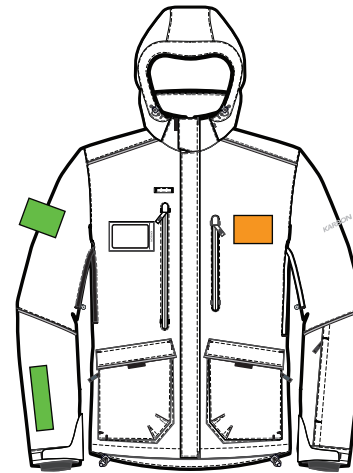
-  Factory logging only
-  Factory logging and Local logging produced

\*factory logging can be placed anywhere on garment.



# KR464 - Nucleus II maintenance jacket

Made from Heavy-duty Taslan abrasion resistant fabric, also with a waterproof rating of 30,000mm, the jacket and pant have been designed to suit maintenance teams and race and event departments.





## KR464 / Nucleus II

### Specs

- Heavy Taslan abrasion resistant fabric
- Karbonite 30,000mm waterproofing
- 0 weight insulation
- Fully seam-sealed
- Griptech waist panels
- Zip off hood
- Radio holster
- 360 degree reflective trim
- Internal Powder skirt
- External pass window
- Waterproof zippers



### Common logo positions

-  Factory logging only
-  Factory logging and Local logging produced

\*factory logging can be placed anywhere on garment.



# KR465 - Core II maintenance pant

## KR465 / Core II


### Specs

- Heavy Taslan abrasion resistant fabric
- Karbonite 30,000mm waterproofing
- 0 weight insulation
- Fully seam-sealed
- Heavy duty Cordura scuff guard
- Multiple cargo pockets
- Internal waist adjuster
- Removable knee padding
- 360 degree reflective trim
- Internal Snow cuff with tie down tabs

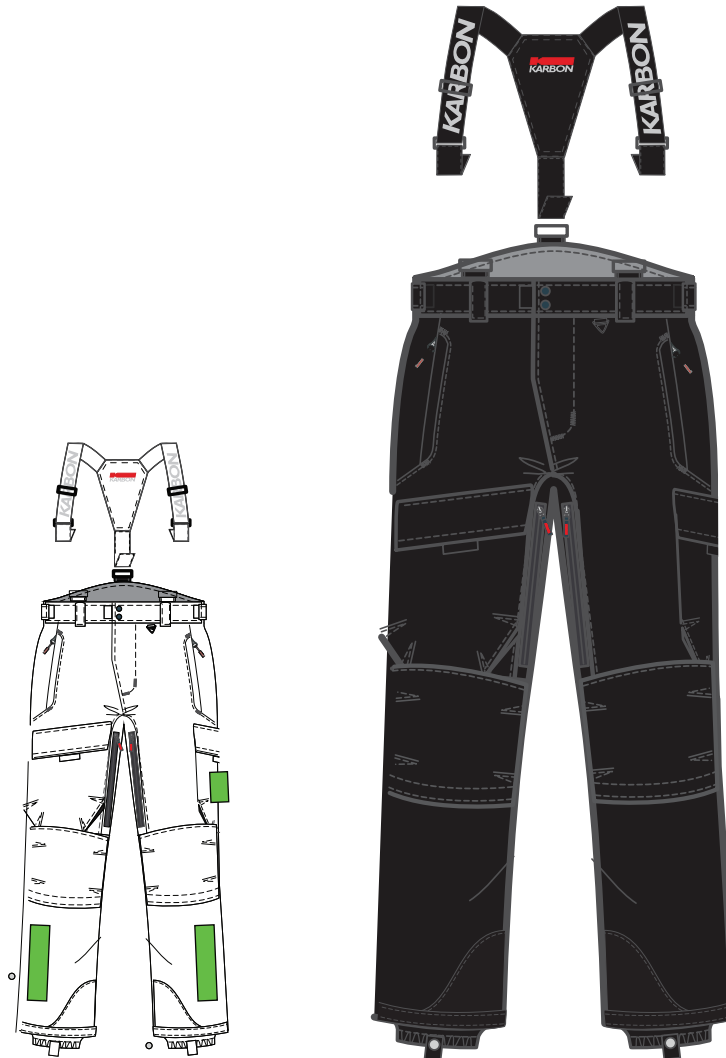


### Common logo positions

 Factory logoing only

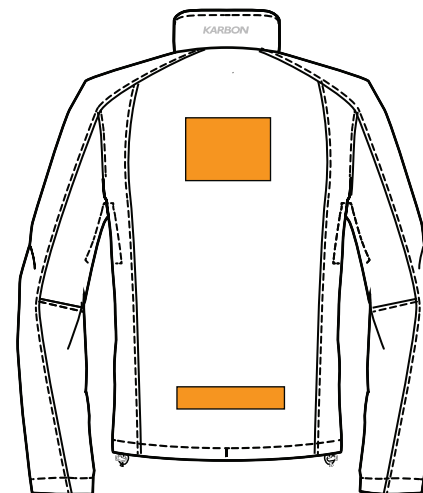
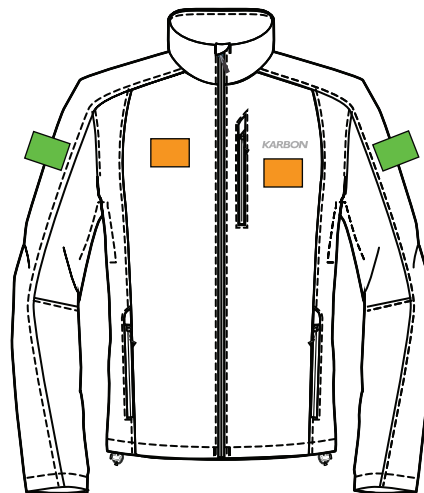
 Factory logoing and  
Local logoing produced

\*factory logoing can be placed  
anywhere on garment.



# KR440 - Atlantis softshell jacket

Proven over time this garment has often well outlasted the 3-year uniform life cycle by using the best quality fabrics and features. A stable garment amongst many resorts, teams, clubs and on-snow programs.




**KR440 / Softshell jacket**


**KA782 / Junior Softshell jacket**

## Specs

- Protek stretch softshell fabric
- Karbonite 15,000
- Bonded fleece lining
- One-touch bottom drawcord
- Waterproof front zipper
- Zippered chest and hand pockets
- Underarm venting

## Common logo positions

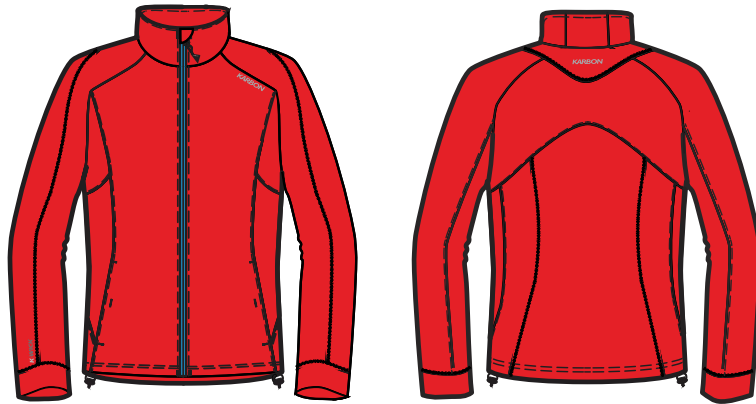
 Factory logoing only

 Factory logoing and  
Local logoing produced

\*factory logoing can be placed  
anywhere on garment.

# Mid-layers - Softstretch

## KA118 - Force softstretch jacket



### Specs

- full-zip softstretch jacket, perfect for indoor use or as a layering piece
- anti-bacterial
- zippered side pockets

**Highly durable garments that can often well outlast the usual 3 year uniform cycle**

## KA811- Attitude softstretch hoody



### Specs

- full-front zippered hoody
- antibacterial
- Kangaroo pocket
- zippered chest pocket



## KA340 - Eros - t neck

### Specs

- 1/4 zip pullover base layer
- thermal brushed interior

### Logo positions available

Both **factory** and **local** embroidery and heat transfers are available on mid layer garments

\*factory logoing can be placed anywhere on garment.

# Mid-layers - Puffers

## K9431 - Poseidon



### Specs

- softstretch sleeves and side panels
- zippered chest and hand pockets
- down insulation on front and back body

## KA414 - Tempest

## KA415 - Tempest junior



### Specs

- Quilted full jacket zip
- Soft touch insulation
- Zippered hand and interior pockets
- Contrast colour zippers available

### Logo positions available

Both **factory** and **local** embroidery and heat transfers are available on mid layer garments

\*factory logoing can be placed anywhere on garment.

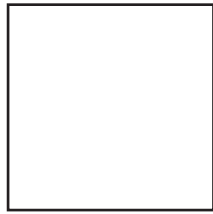


## Team apparel

We can also outfit your team with branded apparel, including long and short sleeve tee's and hoodies. Multiple garment colour options available with a variety of prints to suit the look you're after.



# Standard fabric Colours



ARCTIC WHITE  
AW



ASH  
AS



CHARCOAL  
CH



BLACK  
BK



LIME  
LM



GREEN  
GN



ELECTRIC BLUE  
EB



COBALT BLUE  
CT



SALUTE BLUE  
SB



YELLOW  
YL



ORANGE  
OR



RED  
RD

- Minimum Ordering Quantities (MOQ) apply for Standard Colours but vary per colour (From 30 units)
- Customs colours are available however MOQ's apply



# Karbon sizing guide

## KARBON

### KARBON ADULT UNISEX SIZING

all measurements in centimetres (cm)	3XS	2XS	XS	S	M	L	XL	2XL	3XL
<i>CHEST</i>	81	86	92	97	102	107	112	117	122
<i>WAIST</i>	61	66	71	76	81	88	94	100	106
<i>HIP</i>	81	86	92	97	102	108	114	120	126
<i>INSEAM</i>	70	73	76	79	81	83	84	85	86

#### SIZING GUIDE (as Karbon sizing is based on North American sizing)

<b>Equivalent</b> to AUSTRALIAN MENS size:		XS	S	M	L	XL	2XL	3XL	4XL
<b>Equivalent</b> to AUSTRALIAN LADIES size:	8 - 10	10 - 12	12 - 14	14 - 16	16 - 18	18 - 20			

## KARBON

### KARBON JUNIOR SIZING

all measurements in centimetres (cm)	6	8	10	12	14	16
<i>CHEST</i>	60	65	70	75	80	85
<i>WAIST</i>	54	58	62	66	70	74
<i>INSEAM</i>	53	58	63	68	72	76

#### SIZING GUIDE (as Karbon sizing is based on North American sizing)

<b>Equivalent to</b> AUSTRALIAN KIDS size:	6 - 8	8 - 10	10 - 12	12 - 14	14 - 16	16 - 18
--	-------	--------	---------	---------	---------	---------

Note: the Karbon junior cut is a box-design with shorter arm length than an Adult jacket

#### KR909 RAINCOAT SIZING GUIDE

Raincoat size:	SMALL	MEDIUM	LARGE	X-LARGE
<b>Equivalent</b> to AUSTRALIAN Junior size:	10 - 14	14 - 16		
<b>Equivalent</b> to AUSTRALIAN LADIES size:	6 - 10	10 - 14	14+	
<b>Equivalent</b> to AUSTRALIAN MENS size:		XS	S - L	XL - XXL

#### IMPORTANT INFORMATION

**Size EQUIVALENCIES noted above DO NOT take into account individual body types and are an INDICATION ONLY**